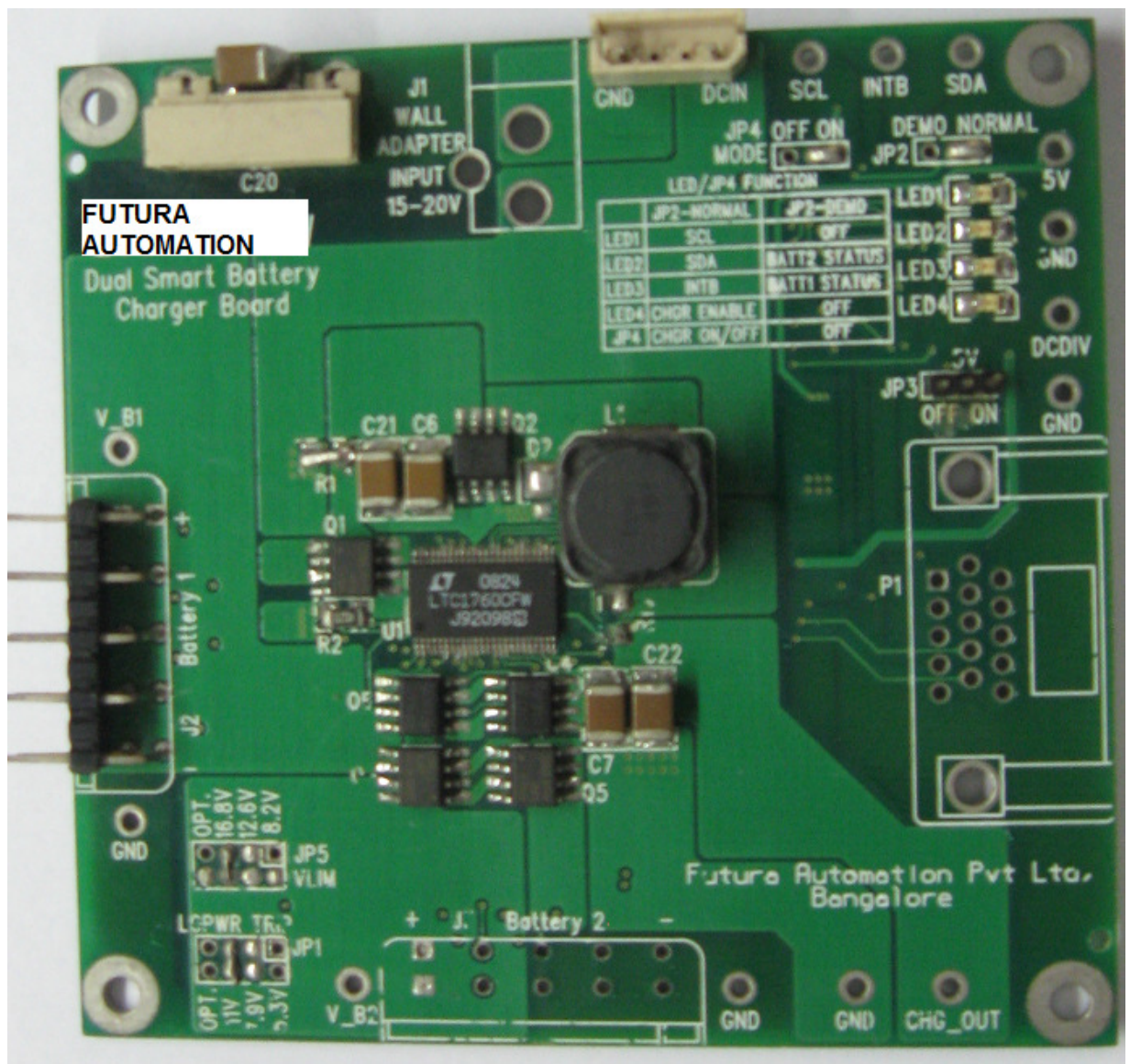




Dual Lithium-Ion smart battery charger

Can charge two Li-Ion smart batteries of 14.4 Volts simultaneously. Has SMBUS interface compatible to SM BUS 2.0 Max charging current for each battery 4 A.





Multi output high efficiency DC-DC converter. Can be used stand alone or as PC/104 power supply

Input: 9 ~ 36 Volts DC

Outputs: +5 Volts: 10 A, 5 V_{SB} (standby): 2.5A +12 Volts: 5A -12 Volts: 1 A (Total 122 Watts max)

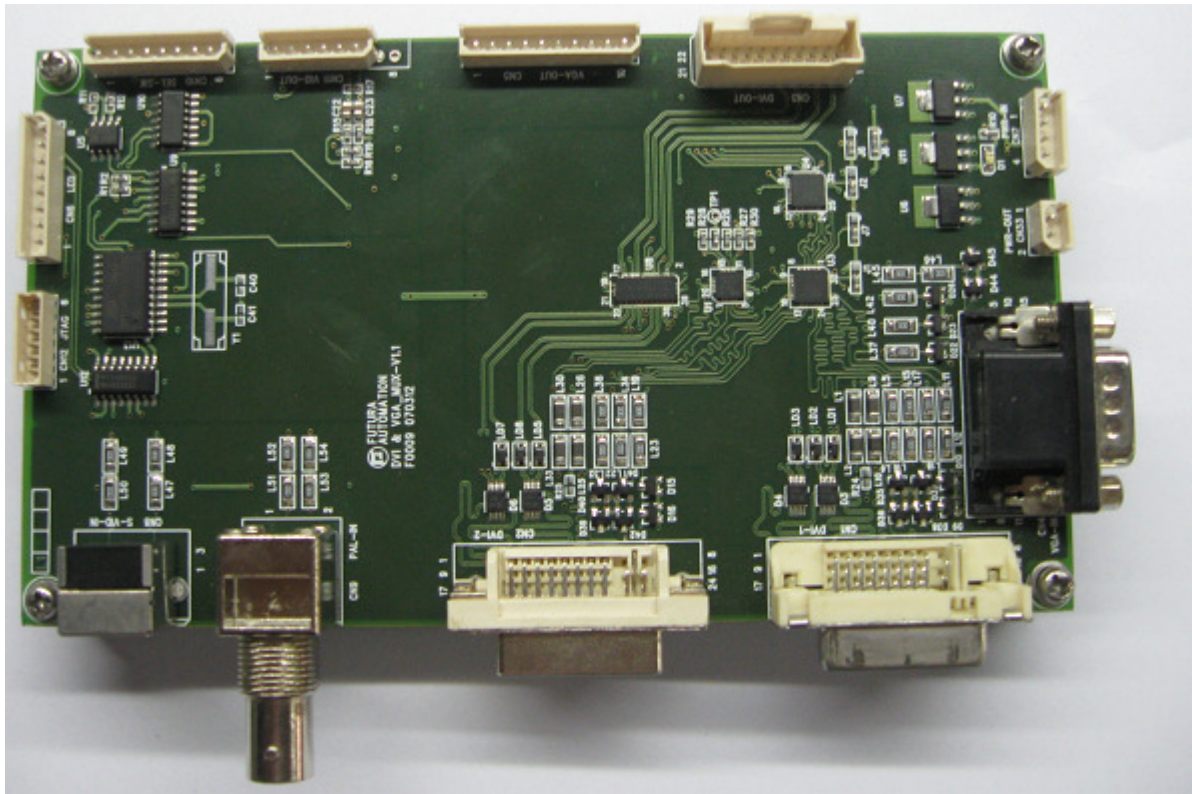
Can be modified as:

Outputs: +5 Volts: 10 A, 5 V_{SB} (standby): 2.5 A , +12 Volts: 12A, -12 Volts; 1 A (Total: 206 Watts max)





DVI MUX PCB. Can accept two DVI-D inputs and give out one DVI-D output. Input selection through external source select switches possible,



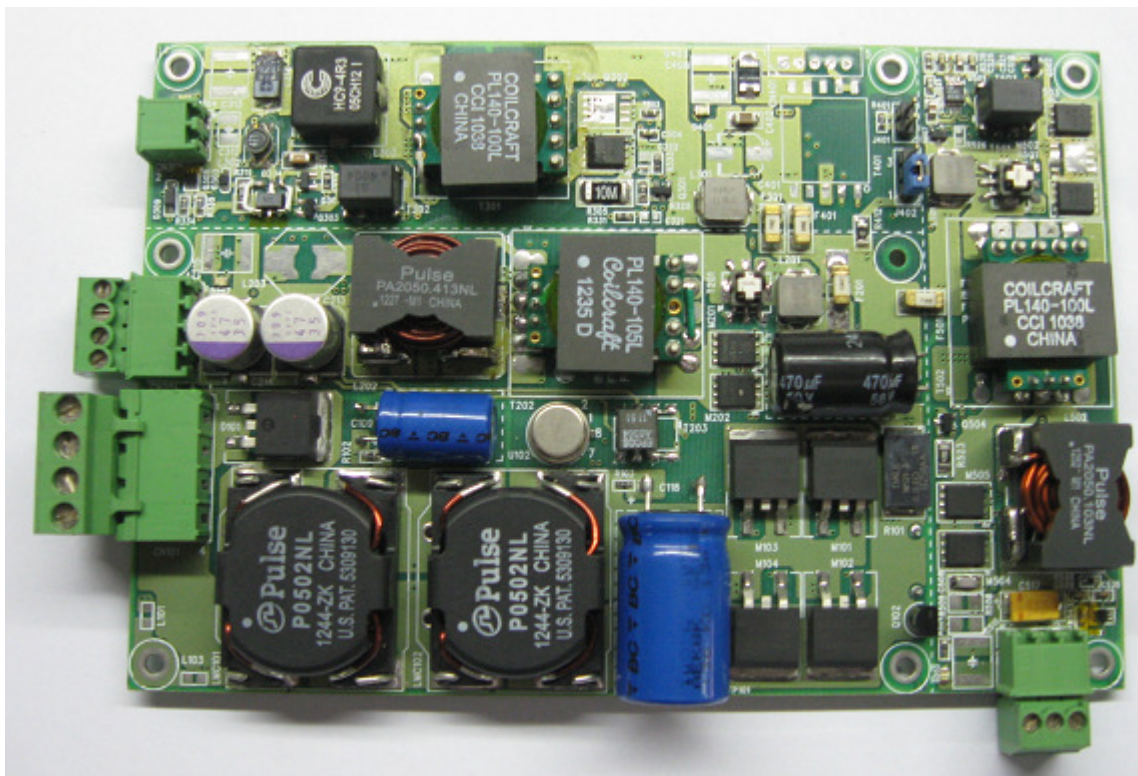


ISOLATED DC-DC converter

Can be customized for different applications . Has built-in MIL-C-1275 filter on-board

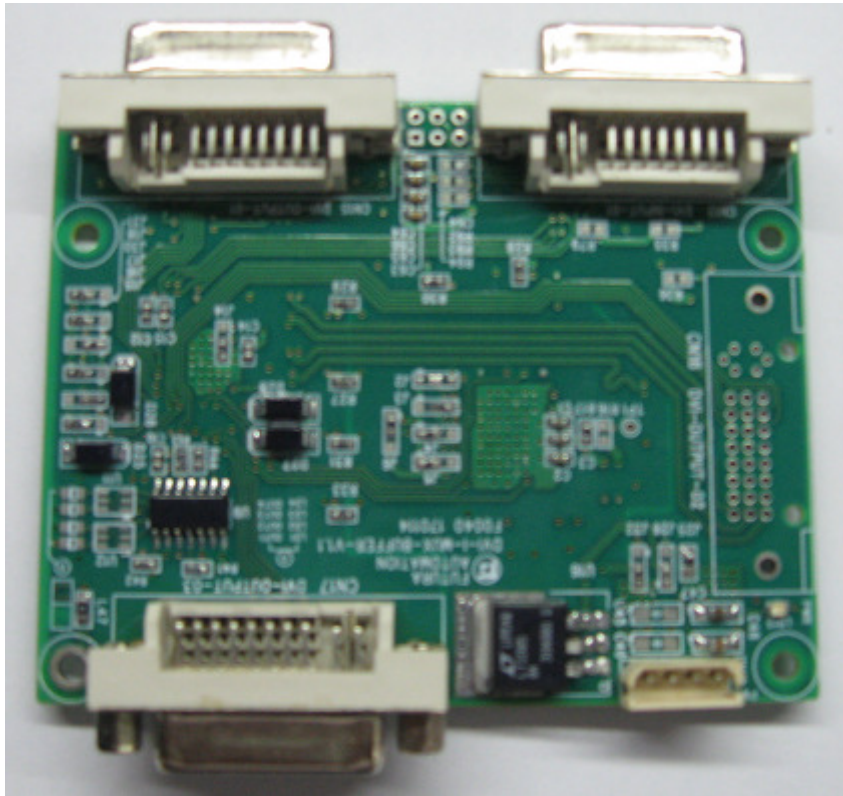
Input 9 ~ 36 V DC

Outputs: 12V: 8A, 24Volts 4A, 5Volts 10A, 5Vsb: 2.5A

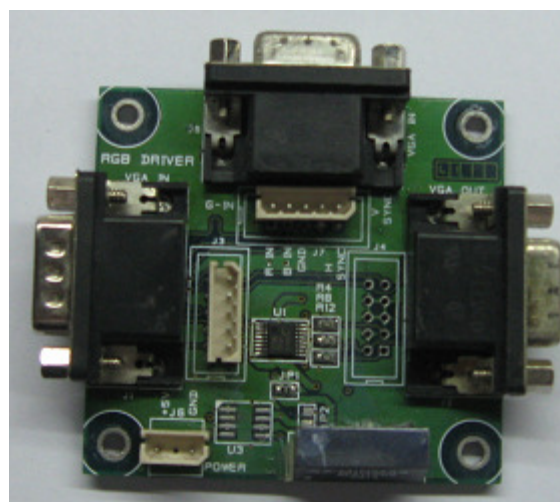




DVI Repeater. Takes in one DVI input up to WUXGA (1920 x 1200) and gives out the same signal on 3 DVI outputs

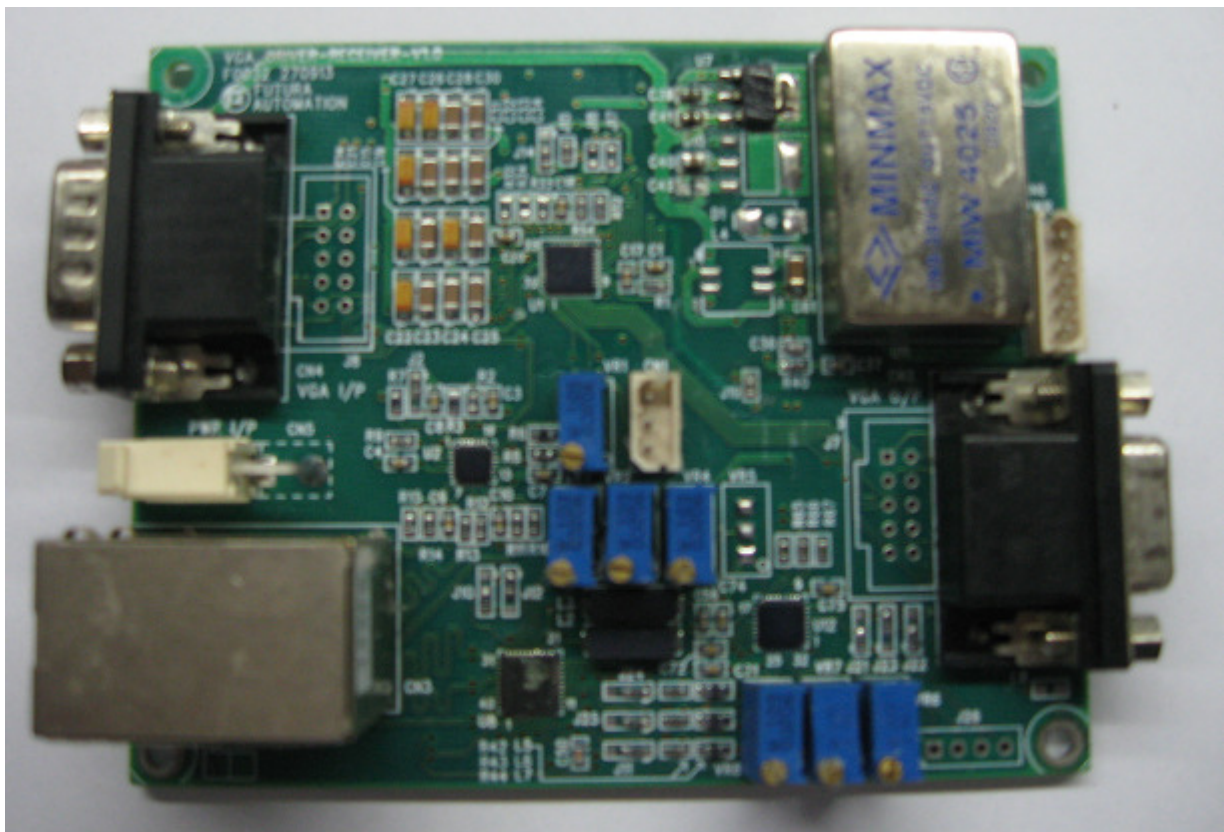


VGA MUX. Takes in one VGA signals and gives out two VAG outputs for two parallel monitors



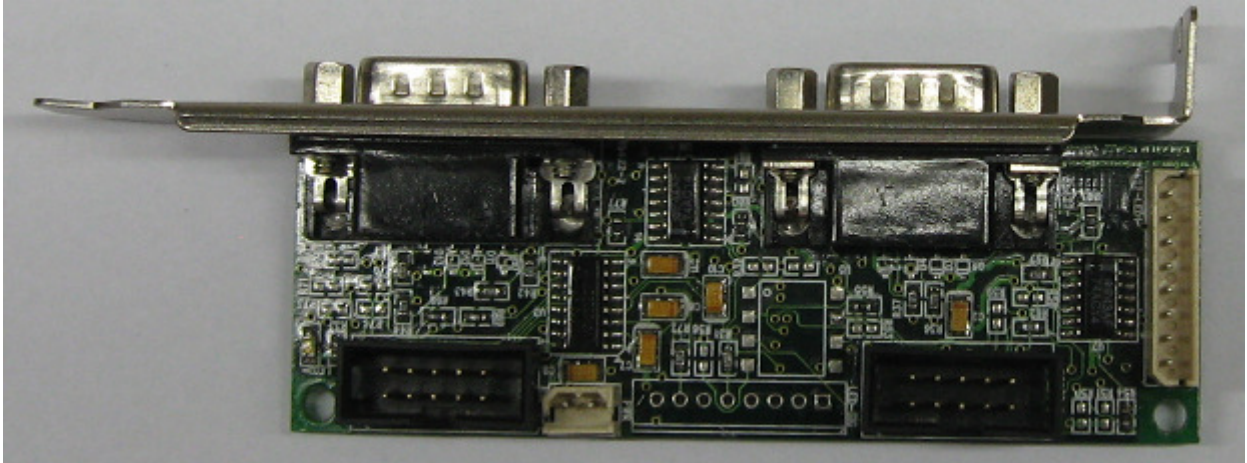


Analog VGA long distance driver/receiver board. Can drive Analog VGA signals up to 300 meters. Same board can be used for Source as well as Remote monitor with a switch for Remote/local function. To be purchased in pairs for local and remote functions.





Dual RS232 to RS 422/RS485 converter module. Stand alone module. Can be used in Any PC. Does not occupy any slot



PC stereo Audio amplifier for external speakers. Can be used in any PC. Does not occupy any slot

