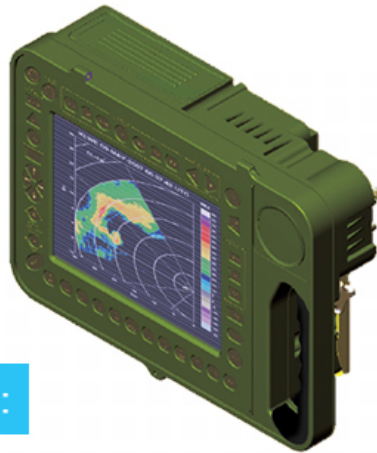




MIDGET CDU



SPECIFICATIONS :

- » Compact Portable Computer with Built in 10.4" SVGA (800x600) LCD for Command , Control & Communication Applications
- » 10.4" LCD with resolution of 800 x 600
- » Luminance : 230 Nits
- » Contrast Ratio : 500 : 1
- » Response Time : 10 ms
- » Viewing Angle : 120 (H) , 100 (V)
- » 40 Piezo Electric Backlit Keys for low ambient light applications around the display
- » Intel ULV Celeron Processor @ 1 Ghz or above
- » 2nd Cache Memory : 512 KB
- » System Chipset : Intel 852GM +ICH4
- » BIOS : AMI BIOS
- » System Memory : 256 MB expandable upto 1 GB
- » Ethernet : Dual Realtek RTL8110SC Gbe chipsets
- » I/O Interface : 4 x USB 2.0
- » 1 x EIDE
- » 1 x CF
- » 1 x KN/MS
- » 5 x RS 232
- » 1 x RS-232/422/485
- » Audio : Realtek ALC655 with AC'97 codec
- » Display Graphics Controller : VGA integrated in Intel 852GM , 18 bit dual channel LVDS
- » Watch Dog Timer
- » Built in 2.5" Note Book Hard Disk Drive of 40 GB Capacity
- » MIL-C38999 Connectors for all other I/Os
- » All-internal sub-assemblies mounted on shock isolators
- » Built in Touch Pad
- » 24V DC Power Input
- » Standard D-Sub Connectors behind a concealed hatch for Lab applications
- » Light Weight Aluminium Alloy Chassis
- » Operating temperature : -20°~ + 50° C
- » Operating Humidity : 95% RH Non-Condensing @ 40°C
- » Vibration : 6~8 Hz ?6mm Constant Displacement
- » 1.5G Peak Acceleration m 9~500 Hz
- » EMI/EMC : As per MIL 461E